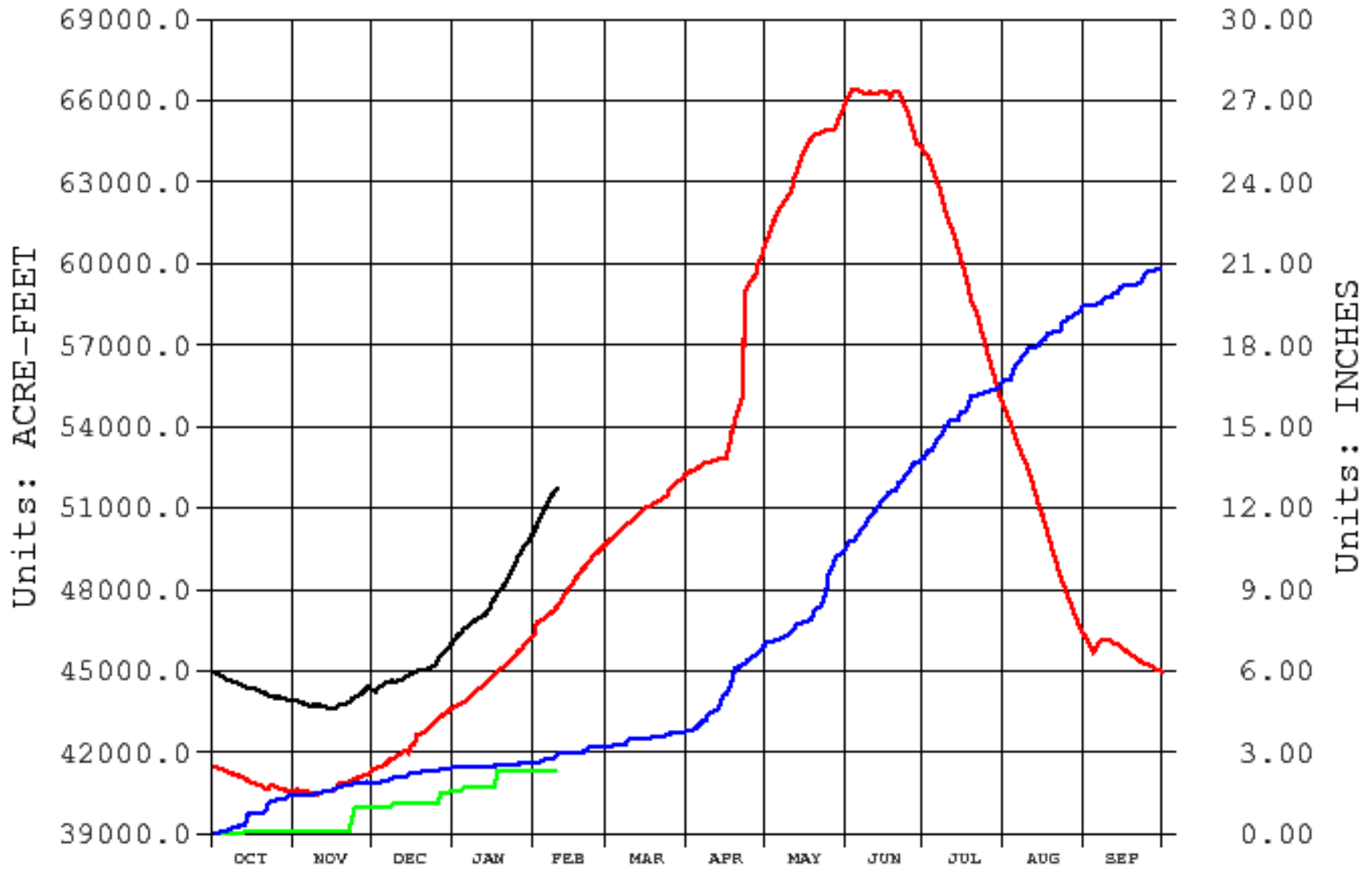


## Frenchman Cambridge 2017 Storage Water Supply

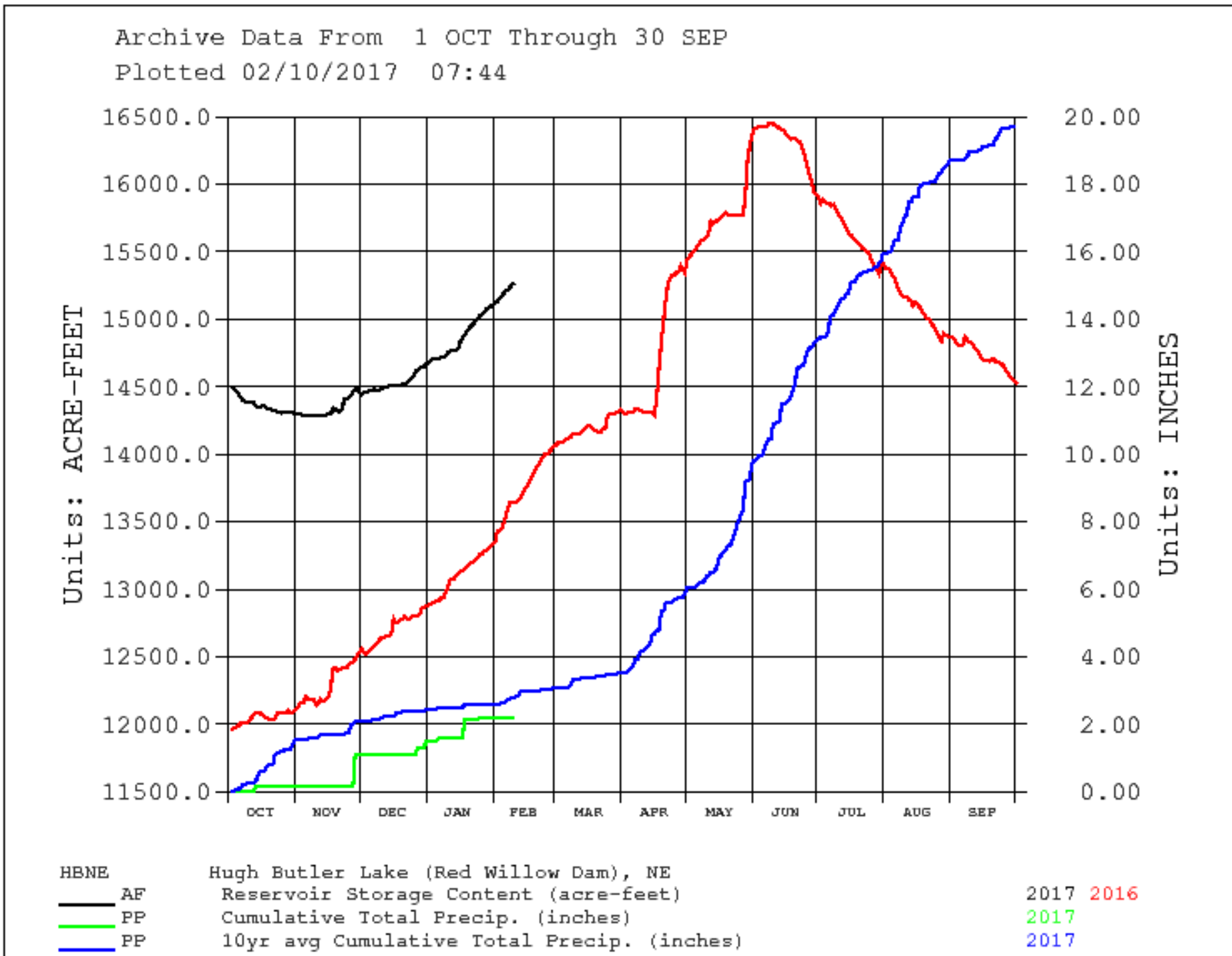
### Reservoir Content / Irrigation Supply

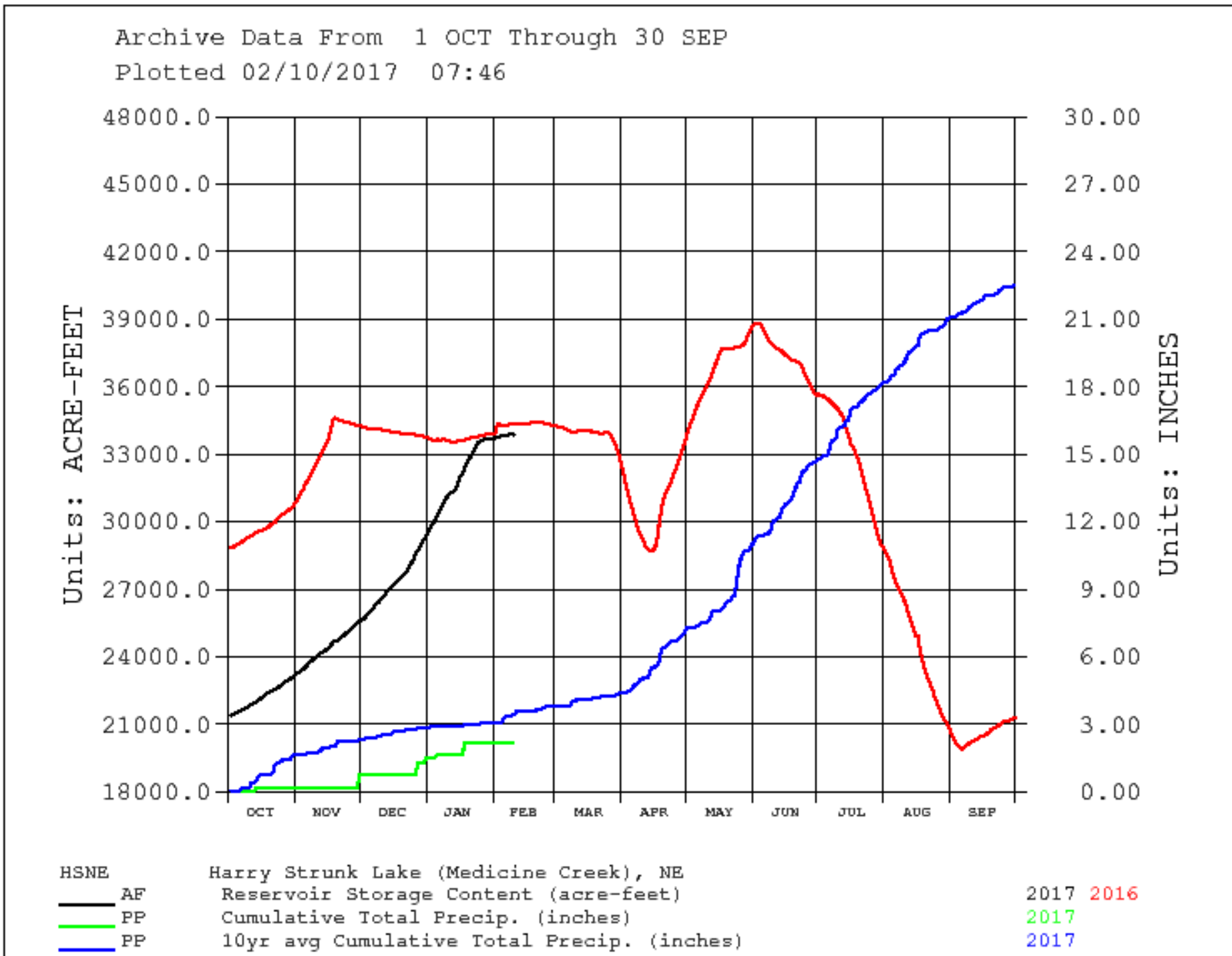
<b>Reservoirs 2017</b>	<b>Swanson</b>		<b>Hugh Butler</b>		<b>Harry Strunk</b>		<b>Total AF</b>
	Elevation	Acre-Feet	Elevation	Acre-Feet	Elevation	Acre-Feet	AF
Top of Irrigation Pool	2752.00	110,175	2581.80	36,224	2366.10	34,647	181,046
* FCID Contracted Shut Off Elevation/Content AF	2725.00	18,958	2561.00	11,212	2343.00	7,897	38,067
<i>FCID Contracted Irrigation Pool Capacity at 100% Full</i>	27.00	91,217	20.80	25,012	23.10	26,750	142,979
<b>Elevation / Content in AF</b>	<b>2737.47</b>	<b>51,762</b>	<b>2565.57</b>	<b>15,269</b>	<b>2365.66</b>	<b>33,846</b>	<b>100,877</b>
<b>% of Full Capacity</b>	<b>47.0%</b>		<b>42.2%</b>		<b>97.7%</b>		<b>55.7%</b>
<b>Current 2017 Irrigation Supply</b>	Feet	A.F.	Feet	A.F.	Feet	A.F.	A.F.
	12.47	<b>32,804</b>	4.57	<b>4,057</b>	22.66	<b>25,949</b>	<b>62,810</b>
Friday, February 10, 2017	% Irr. Pool	36.0%	% Irr. Pool	16.2%	% Irr. Pool	97.0%	43.9%

Archive Data From 1 OCT Through 30 SEP  
 Plotted 02/10/2017 07:43



TRNE Swanson Lake (Trenton Dam), NE  
 AF Reservoir Storage Content (acre-feet) 2017 2016  
 PP Cumulative Total Precip. (inches) 2017  
 PP 10yr avg Cumulative Total Precip. (inches) 2017





<b>Reservoirs 2017</b>	<b>Harlan Co.</b>		<b>Lovewell</b>		<b>Enders</b>	
	Elevation	Acre-Feet	Elevation	Acre-Feet	Elevation	Acre-Feet
Top of Irrigation Pool	1945.73	314,111	1,582.60	35,666	3112.30	42,910
Contracted Shut Off Elevation/Content AF	1930.84	149,060	1,571.70	11,644	3082.40	8,948
<i>Contracted Irrigation Pool Capacity at 100% Full</i>	14.89	165,051	10.90	24,022	29.90	33,962
<b>Elevation / Content in AF</b>	<b>1936.56</b>	<b>204,424</b>	<b>1,583.69</b>	<b>39,012</b>	<b>3084.88</b>	<b>10,587</b>
<b>% of Full Capacity</b>	<b>65.1%</b>		<b>109.4%</b>		<b>24.7%</b>	
<b>Current 2017 Irrigation Supply</b>	<b>Feet</b>	<b>A.F.</b>	<b>Feet</b>	<b>A.F.</b>	<b>Feet</b>	<b>A.F.</b>
	5.72	<b>55,364</b>	11.99	<b>27,368</b>	2.48	<b>1,639</b>
Friday, February 10, 2017	% Irr. Pool	33.5%	% Irr. Pool	113.9%	% Irr. Pool	4.8%

